

Homestead-Wakefield Elementary School

900 South Main Street
Bel Air, MD 21014
www.homesteadwakefield.com

Phone (410) 638-4175
Fax Homestead (410) 638-4317
Fax Wakefield (410) 638-4319

Welcome back parents! Below is information regarding walker and car rider information for the Homestead building. The procedures are in place to ensure that we have the safest environment possible for students, staff, and parents. Please do not hesitate to contact us should there be any questions or concerns. Thank you for your anticipated cooperation and patience.

Cordially,

Chris Cook

Chris Cook
Principal

Tracey Hanus

Tracey Hanus
Assistant Principal

Arrival

Parent drop off is not available prior to 8:30 a.m. due to staff not being on duty. Due to limited parking spaces, cars for student drop-off may not park in the lot between 8:30 a.m. and 9:00 a.m., unless there is business to address in the school. There is additional overflow parking at Bel Air Middle School if needed. Each bullet below corresponds to a specific number located on the map (see reverse). Children who are not in their classroom by 9:00 a.m. are considered tardy and should be escorted by a parent/guardian to the office.

- 1 Car riders will stage in line and wait until a staff member comes on duty. Once on duty, the staff member will direct cars to enter the lot in a single-file line. Please obey the directions of the staff member.
- 2 Proceed to the Kiss and Drop area. For safety reasons, it is recommended that all children exit vehicles on the curb side/driver side. Please do not pass vehicles dropping children off.
- 3 After dropping off your child, exit the Kiss and Drop area by turning right. Please yield to school buses and obey the directions of staff members.

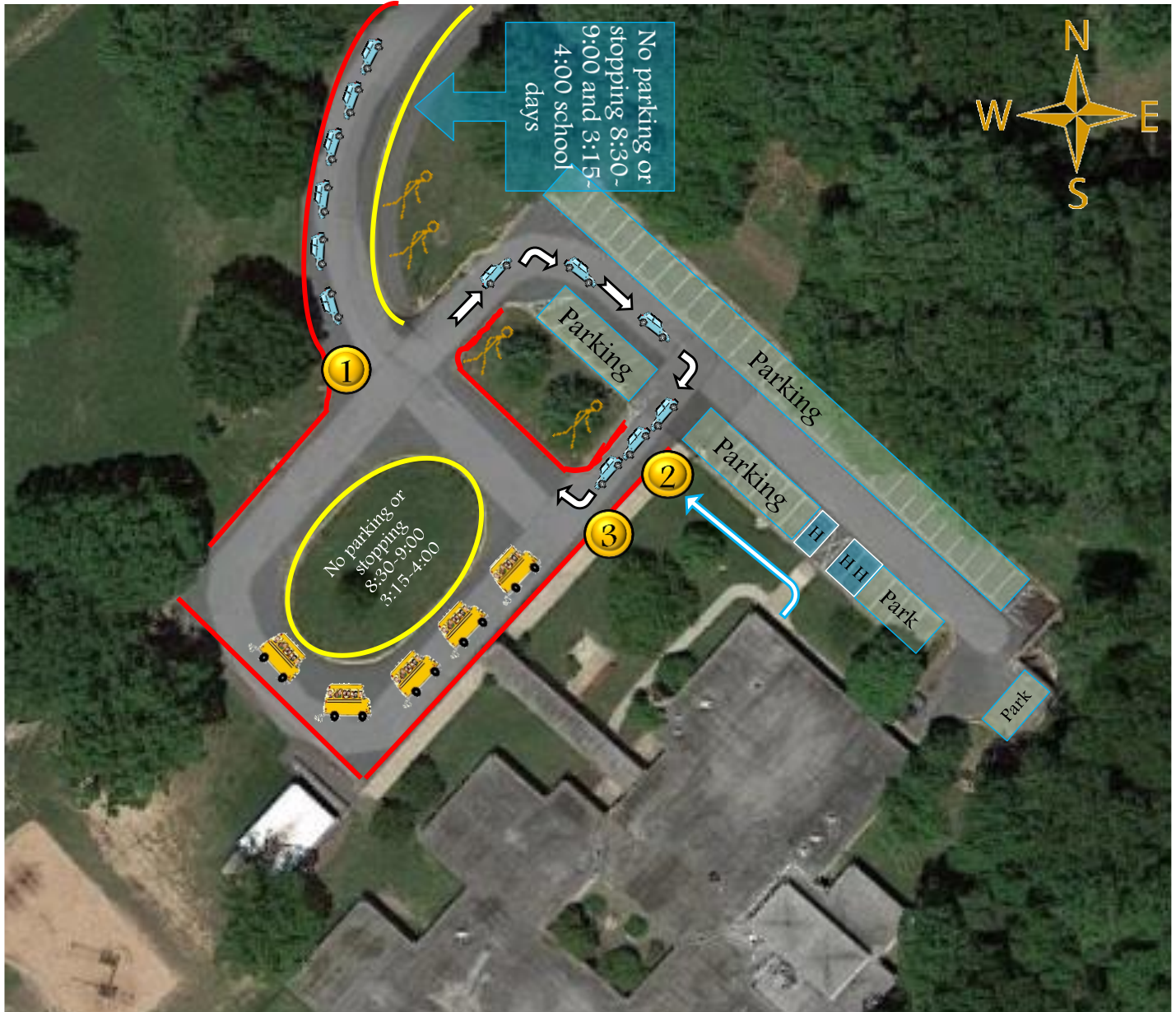
Dismissal

Dismissal begins at 3:30 p.m. but could vary. Due to limited parking on our school campus, cars are not permitted on the parking lot until directed by a staff member. If you have business to address inside the school, you are welcome to use any open parking space.

Parents/Guardians will be given a “Fast Pass” which will help our staff to quickly identify your child. Passes will be distributed as quickly as possible. Please have your “Fast Pass” on display in your dash or readily available. If you need additional passes, please alert the school. Failure to display your “Fast Pass” may result in delays. Each bullet corresponds to a specific number located on the map (see reverse).

- 1 Cars will stage in line until dismissal starts. Once directed, cars will enter the lot.
- 2 Students will exit the building and meet you at the curb. For safety reasons, it is recommended that all children enter vehicles on the curb side/driver side.
- 3 After picking up your child, turn right to exit the lot. Yield to school buses and please obey the directions of staff members.

Homestead Car Rider Map



In addition, please observe the following “best practices” and courtesies:

- Please refrain from talking/texting on cell phones while driving on the school campus.
- Handicap spots are reserved for permit holders only.
- Please observe your speed when on the school campus.
- Please pull forward in the Kiss and Drop lane and have your Fast Pass visible.
- Please observe the directions of staff members. Their purpose is to ensure everyone is safe!
- Changes in dismissal should be provided in writing and in advance. Changes late in the afternoon should be reserved for emergencies only.
- If you will be late picking-up, please call the school so we are prepared.
- Children who are chronically late to school or late being picked-up may be referred to the Attendance Committee or Pupil Personnel Worker.